



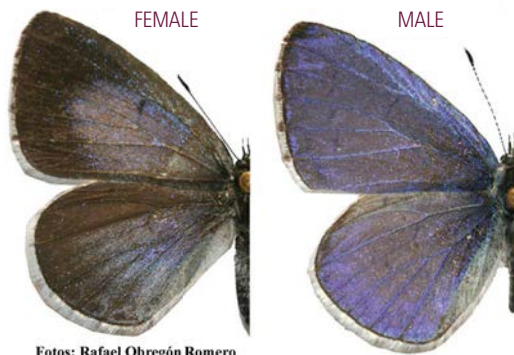
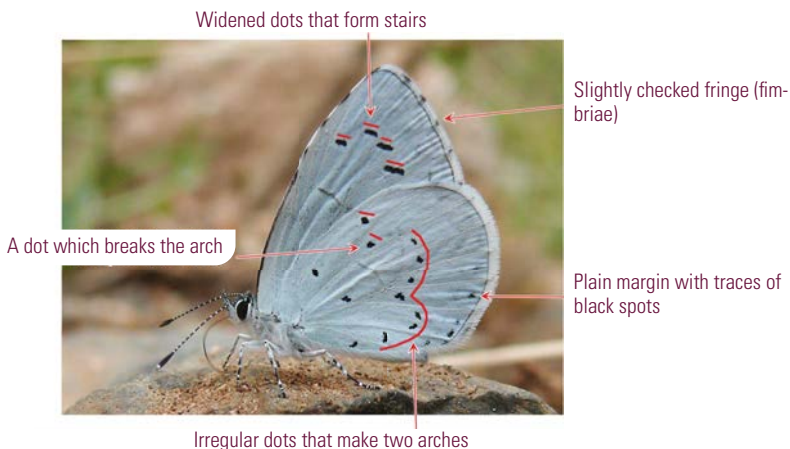
Holly Blue

Celastrina argiolus (Linnaeus, 1758)

DESCRIPTION

Wingspan: From 2.4 to 3.1 cm. **Closed wings:** Their colour is light grey, so they seem white. Spots on the forewings are flat, or stretched, and make a stepped arch. The wings have slightly checked external hairs (*fimbriae*). There are small irregular dots on the hindwings, which form two arches. The first of them is broken at the second dot, which is closer to the inner part of the wing. All wings have plain margins, though they might be black spots traces. **Open wings:** This species hardly ever stretches the wings. Both sexes are bright blue, with thin dark margins in the case of male butterflies. Female butterflies are not as blue because their margins are wider

KEY FOR VISUAL IDENTIFICATION



SIMILAR SPECIES

Lorquin's Blue: It is smaller, and darker grey than the Holly Blue. The series of dots on the forewings are slightly flat but not stepped. There are round dots on the hindwings, and *fimbriae* are not checked. **Green-underside Blue and Black-eyed Blue:** Both species' grey colour is darker and it does not seem white. There are round dots, which are larger on the forewings. Their *fimbriae* are not checked.



Lorquin's Blue



Green-underside Blue



Black-eyed Blue

BIOLOGY & HABITAT

Several generations fly at the same time from January to October. The first emerges in March and the rest of them mainly from May to August.

These butterflies prefer mountains, and live close to rivers, streams, cattle tracks and other shady and a bit humid places. Occasionally, they can be found in urban areas, above all on the outskirts of mountainous villages or their parks and gardens. Caterpillars mostly feed on the ivy (*Hedera helix*) and the blackberry *Rubus ulmifolius*. Therefore, they look for shady and humid habitats where these plants live. They fly high, above blackberries and ivies. They do not rest very often, but when they do, they do it several metres from the ground.

Jan	Feb	Mar	Apr	May	Jun	Jul	Aug	Sep	Oct	Nov	Dec
-----	-----	-----	-----	-----	-----	-----	-----	-----	-----	-----	-----

DISTRIBUTION

It is present at most of the stages along the GMP except along the coast and at some of the stages in the north of the province. Anyhow, it is rare and limited to specific locations. It is more common at the stages which are close to rivers and streams, such as the Guadiaro and the Genal.

